

# Post Secondary

Dana Levesque

*(pronounced Donna Levek)*

Coordinator of Post Secondary



**How do we launch students out of high school instead of just walking out the door?**

# How can students prepare for after high school?

Post Workforce Readiness (PWR) says there are 3 **Big** areas to lean into.

- Work Based Learning
- Industry Certifications
- Concurrent Enrollment



# Why the Big 3?

- Work Based Learning
- Industry Certifications
- Concurrent Enrollment

## Is a High School Diploma Enough?

- to make a living wage?
- to find a career?





# Why?

## OF EVERY 100 COLORADO HIGH SCHOOL STUDENTS

**83** will earn a diploma

**43** will enroll in college after one year

**26** will graduate college within 6 years

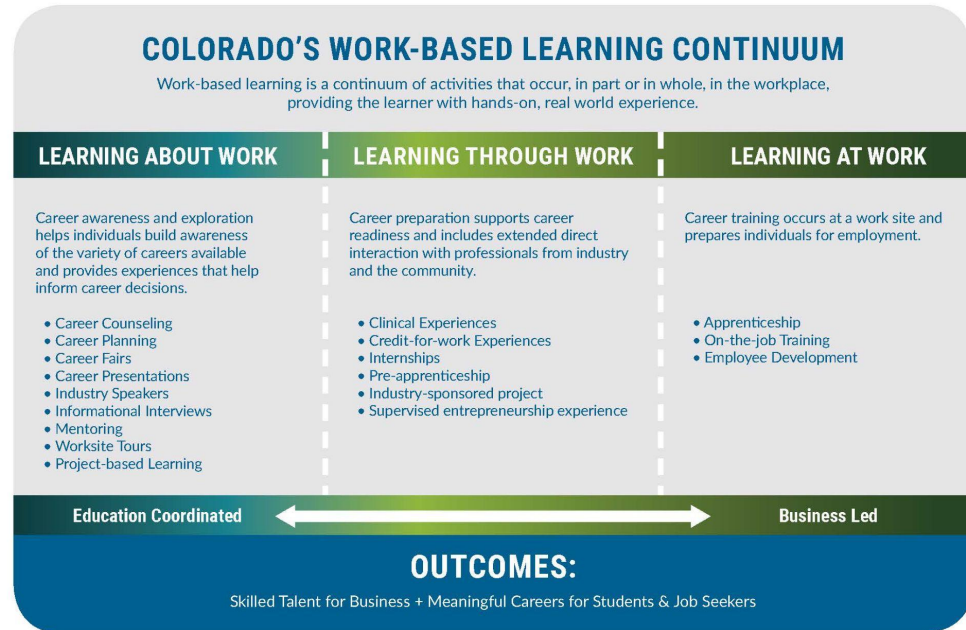
**20** will make a living wage for an individual within 5 years (\$40K)

**7** will make a living wage for a family within 5 years (\$77K)

# Work Based Learning

## Career Technical Education (CTE)

- One of the components of CTE is Work Based Learning
- EPIC is a CTE campus
- WBL is available at each high school and EPIC



# Industry Certifications

## Career Technical Education (CTE)

- One of the focus areas of CTE
- EPIC and several high school CTE courses offer industry certifications.
  - Comptia A+ (Computer Science)
  - Subaru Level 1 (Automotive)
  - CNA (Nurse Aide)
  - ServSafe Manager (Prostart)
  - Microsoft Office Specialist (Business)
  - Solidworks (Engineering)
  - Many more...



# College Credit

Concurrent Enrollment

Advanced Placement

International Baccalaureate



Handouts



# Post Secondary Learning Advisory Committee PSLAC

- Advanced Placement - AP
- Career Technical Education - CTE
- Concurrent Enrollment - CE
- International Baccalaureate - IB
- School to Work Alliance - SWAP





# LITTLETON PUBLIC SCHOOLS

## Learn More

### ADVISORY COMMITTEES

#### Community involvement is at the heart of what we do.

Littleton Public Schools places the highest priority on involvement with its community. Local citizens serve on numerous committees, both at the school level and the district level, to build upon the strong foundation of educational excellence and guide the district into the future. These committees include:

- [Citizens' Bond Oversight Committee \(CBOC\)](#)
- [District Accountability Committee \(DAC\)](#)
- [Educational Technology Advisory Committee \(ETAC\)](#)
- [Financial Advisory Committee \(FAC\)](#)
- [Gifted and Talented Advisory Council \(GTAC\)](#)
- [Long-Range Planning Committee \(LRPC\)](#)
- [PTO Presidents Council \(PPC\)](#)
- [Post-Secondary Learning Advisory Committee \(PSLAC\)](#)
- [Special Services Advisory Committee \(SSAC\)](#)
- [Special Transportation Task Force](#)
- [Wellness Committee \(WC\)](#)



### Concurrent Enrollment ASCENT & TREP



# LITTLETON PUBLIC SCHOOLS

## Post Secondary

Dana Levesque  
*(pronounced Donna Levek)*

Coordinator of Post Secondary  
[dlevesque@lps.k12.co.us](mailto:dlevesque@lps.k12.co.us)  
303-347-3568



How do we launch students out of high school instead of just walking out the door?